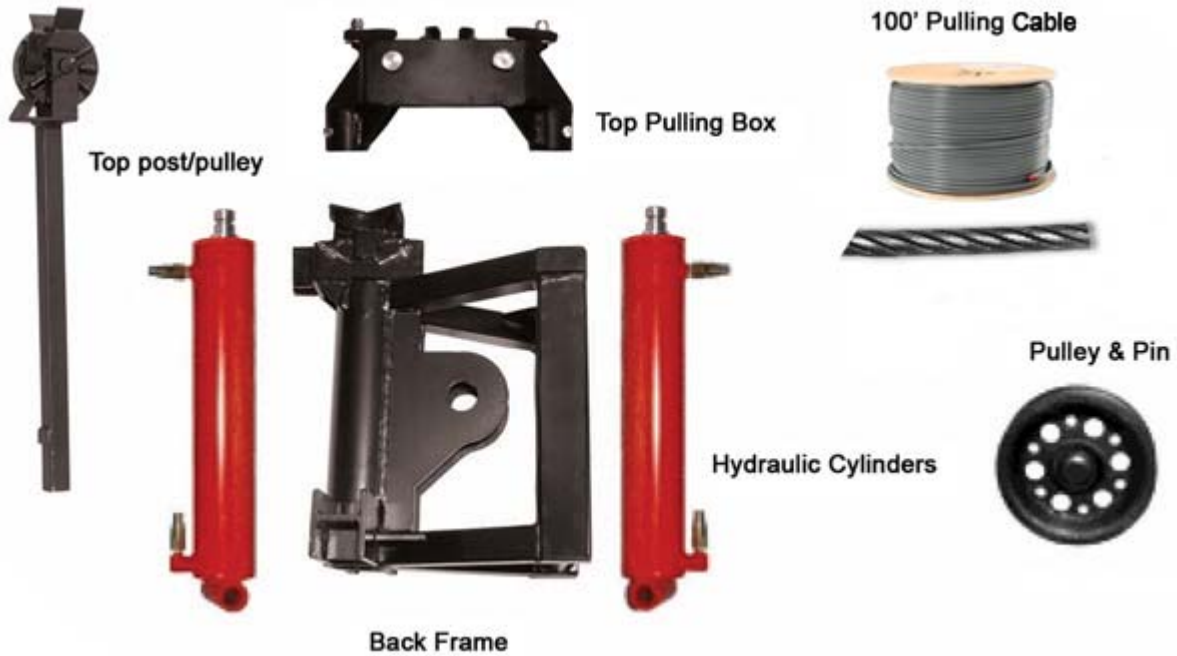


20 Ton Puller - Components Chart

ASSEMBLES IN 1 MINUTE!



All Pulling Units come complete and ready for work

- 🇺🇸 1 Minute to Assemble
- 🇺🇸 2 Hours to Learn Operation
- 🇺🇸 Install any type of pipe
- 🇺🇸 33% more pulling power
- 🇺🇸 Safe Near Underground Utilities
- 🇺🇸 Hollow cones for easy removal
- 🇺🇸 Taperd cones exerting added pressure
- 🇺🇸 Install sewers in small working area
- 🇺🇸 Pull through 45 degree angle
- 🇺🇸 Positive latch on cable - will not slip
- 🇺🇸 Pull speed up to 5' per minute
- 🇺🇸 No maintenance
- 🇺🇸 Very Compact & Easy to Transport
- 🇺🇸 Extremely Low Operating Costs
- 🇺🇸 Built-to-Last Construction
- 🇺🇸 Rough & Tough Performance