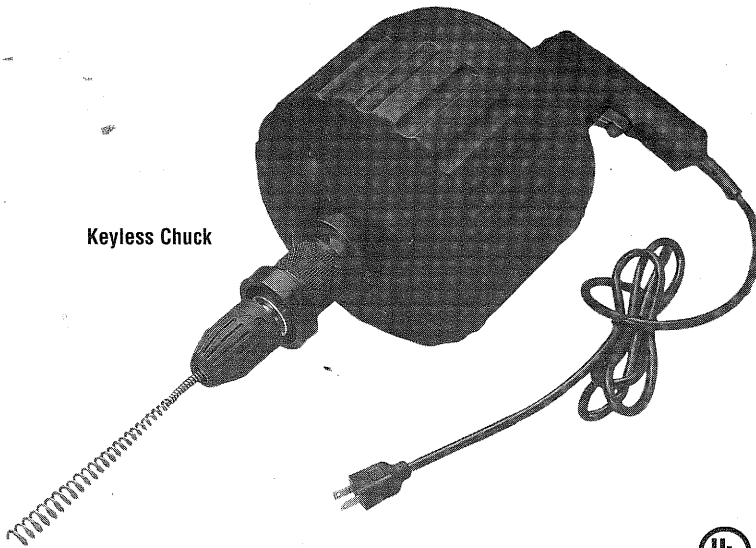


**Cable Drum Machine
Operation
Manual**

ST100 DELUXE

Cleans 1 1/4" to 3" lines up to 50'

Used For: Sinks, Showers & Tub Drains



Keyless Chuck



WARNING - Read All Instructions, When Using Electric Tools, Basic Safety Precautions Should Always Be Followed To Reduce The Risk Of Fire, Electric Shock And Personal Injury. Save These Instructions."



THE BEST VALUE IN THE LINE™

SAFETY INSTRUCTIONS

Important

Replacement parts:

When servicing, use only identical replacement parts. Polarized plugs: To reduce risk of electric shock, this equipment has a polarized plug (one blade is wider than the other). This plug will fit in a polarized outlet one way. If the plug does not fit fully in the outlet, reverse the plug. If it still does not fit, contact a qualified electrician to install the proper outlet. Do not change the plug in any way.

Failure to read and follow these instructions may result in damage to the machine or injury to the operator.

- Check the power cord for damage, ensure that the plug has been removed from the socket. If the cord is damaged in any way, do not use.
- This product is designed to be used by one person only. The operator must control the cable.
- Keep children away from the work area and the cable.
- DO NOT wear loose clothing, neck ties, unbuttoned jackets, rings, watches or jewelry. Always tie back long hair to avoid it from becoming entangled with the cable.
- Wear snug fitting leather gloves when operating this machine. Do not use cloth or fabric gloves as these can get caught in the coils of the cable while it is rotating as well as the belt on the drum pack.
- Familiarize yourself with the functions and controls before using this machine.
- ALWAYS wear protective goggles and safety shoes.
- Do not use this machine when you are tired, have been drinking alcohol or are taking medication that may make you drowsy or less alert.
- Always try to keep your balance and do not overreach while using this machine.
- DO NOT operate this machine in reverse. Operating the machine in reverse can result in cable damage and must only be used to help back a cable out of an obstruction.
- It is recommended that the machine is positioned within 2 feet of the inlet. A greater distance could result in the cable twisting or kinking which may in turn result in the end of the cable springing unexpectedly from the inlet. This can be dangerous.
- If the cord supplied with this machine is not long enough, you must use a 16-gauge heavy-duty outdoor type extension cord and ensure that it is fully unwound. Using lighter cords can result in severe power loss and motor overheating.
- When in use, DO NOT use too much force – let the cable heads do the work.
- If the cable begins to buckle or build up too much twist, turn the machine off immediately and rotate the cable in the opposite direction until the twist or buckle has been removed.
- DO NOT make any modifications whatsoever to this product.
- DO NOT use this product for anything other than its intended purpose. Improper use could result in personal injury or damage to the product and will also invalidate the product warranty.
- Where strong cleaning compounds have been used in drains, take particular care to avoid contact with the cable or debris found in the drain. Strong cleaning compounds can cause serious burns to the skin and cause severe irritation to the eyes.
- Keep these instructions in a safe place for future use or when loaning or selling the product.
- If you are in any doubt at all about how to use this machine, consult a suitably qualified plumber.

OPERATING INSTRUCTIONS

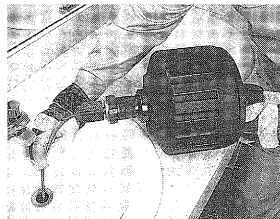


Figure 1

IMPORTANT: You must read the safety instructions for this machine before use.

- 1 For best results it is recommended that the machine is positioned within 2 feet of the drain. (see Fig. 1)
- 2 Loosen the chuck with the chuck key, pull sufficient cable out of the drum and place the end of the cable as far into the drain as possible.
- 3 Plug the power cable into the electrical socket and switch the power on.
- 4 Switch the drill direction to forward (FOR) and fully depress the trigger. The cable will begin to turn. Keep one hand on cable when it is rotating.
- 5 Pull approximately 5 feet of extra cable from the drum creating a slight loop of cable between the machine and the inlet. This should gently be fed into the inlet.
- 6 Once the obstruction has been cleared, the line should be washed through with a hose or power washer.

Note: It is recommended that the cable is continuously flushed through with clean water as it is being retrieved from the inlet and again before putting it away.

- 7 To retrieve the cable, pull one or two feet of cable from the inlet (drain or stack) while running the machine in forward (FOR) position and push the cable into the drum. Continue this procedure until the end of the cable is just inside the inlet.
- 8 Turn off the machine, remove the remaining cable from the inlet and hand feed it back into the drum. Finally, tighten the chuck (hand tight).

Warning A: Do not allow the cable to get hung up on the obstruction. If the cable end gets hung up on an obstruction, stop the motor and reverse (REV) the drill until the cable becomes free. Once free from the obstruction, turn motor to the forward (FOR) position and resume clearance operation.

Warning B: Do not allow cables to become "over-stressed." Over stressing cables due to a stubborn obstruction or snag will create tension in the cable leading to cable damage or an unpredictable cable reaction. If the cable becomes over-stressed, follow the same procedure as advised in "Warning A."

Warning C: Never fully retract the cable from the inlet while it is rotating.

Note: It is recommended that the cable is continuously flushed through with clean water as it is being retrieved from the inlet and again before putting it away.

ELECTRICAL SAFETY

WARNING: Always unplug the power cord when adjusting or cleaning the machine.

- Check that the power specification used is the same as specified on the nameplate found on the cable motor.
- When using extension cords outdoors, use only those recommended for outdoor use and ensure that the cable reel doesn't sit in water.

MACHINE MAINTENANCE

WARNING: Always unplug the power cord when adjusting or cleaning the machine.

- Regularly inspect cables for damage. Replace worn or kinked cables.
- Inspect machine's electrical lead and extension lead for damage. Never use frayed, broken, or worn cables.
- When not in use, store the machine in a secured, locked area, out of the reach of children and people unfamiliar with this machine.

TO REMOVE DRUM

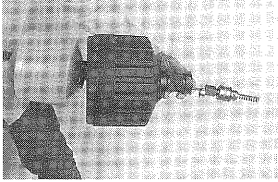


Figure 2

- Hold the inner rotating drum steady in one hand and turn the chuck counter-clockwise and remove. **(see Fig. 2)**
- Loosen the allen screw and remove the collar.
- Slide the drum shield assembly off.
- TO REPLACE the drum, reverse the steps above.

INSTALLING REPLACEMENT CABLE

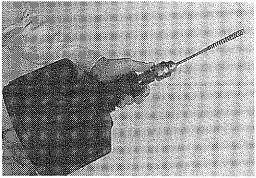


Figure 3

- Loosen chuck and remove the existing cable from the machine.
- Uncoil the new cable completely Carefully insert the cable into the drum and continue doing so until installation is complete.
- Finally, tighten the chuck. **(see Fig.3)**

SPECIAL APPLICATIONS

Reverse Operation

Running this machine in reverse should only be done if the cable becomes blocked and only for a few seconds, enough to free the end of the cable. If the cable gets caught on an obstruction, immediately release the trigger to allow the machine to come to a complete stop. Fully tighten the chuck and turn the drill switch to the (REV) position. Grasp the cable with a gloved hand and pull it while jogging the trigger. When the cable is dislodged, place the drill switch in the forward (FOR) position, loosen the chuck, and follow normal operating procedure.

Lubrication

Grease all exposed and moving parts.

Storage

The machine must be kept in a dry, safe place, out of the reach of children.

Cables

The metal cable should be thoroughly cleaned with water to prevent unpleasant odors and the damaging effects of drain cleaning compounds.

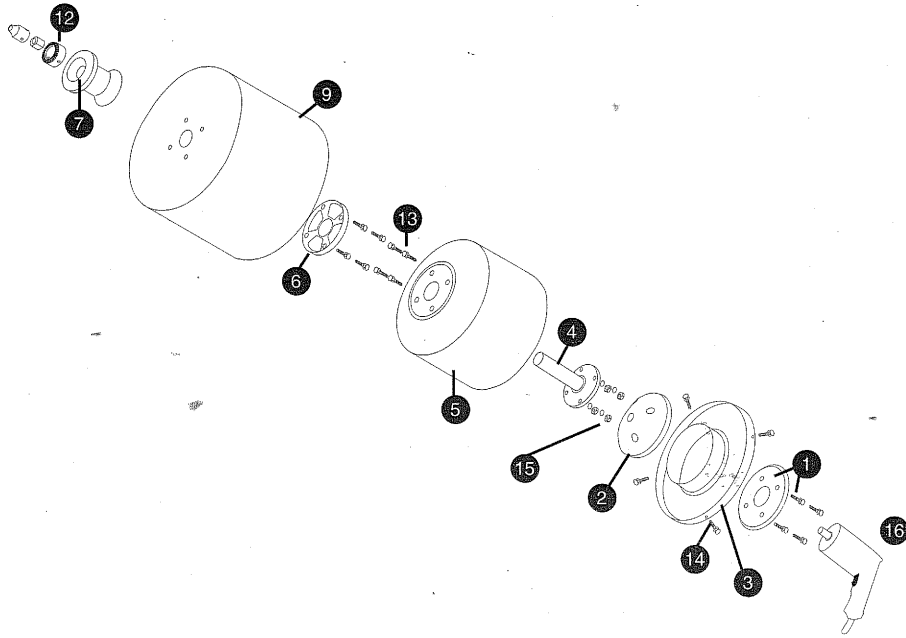
WORK AREA ENVIRONMENT

- Do not expose to rain
- Keep work area well lit
- Do not use machine in presence of flammable liquids or gases
- Guard against electrical shock
- Prevent body contact with grounded surfaces
- Properly store machine when not in use
- Never carry machine by its cord or yank the cord to disconnect machine
- Don't overreach. Keep proper balance at all times
- Avoid unintentional starting
- Be sure drill switch is in the OFF position when starting.
- Keep cord from heat, oil, and sharp edges
- Check for damaged parts before using machine:
parts that are damaged should be carefully checked to determine that the machine will operate properly and perform its intended function.
- Check for alignment of moving parts, breakage of parts, mounting and any other condition that may affect the machine's operation.

Note:

- Defective drill switch should only be replaced by an authorized service center.

PARTS



REF#	PART NO.	DESCRIPTION	MSRP
1	400-990121	Drill Mount Assembly	26.25
2	400-990122	Cover-Drill Mount	8.40
3	401-990122	Cover-Drum	12.60
4	401-990125	Shaft Extension-Assembly	19.95
5	401-990121	Metal Drum	48.00
6	400-990123	Retaining Ring-Bushing Washer (2)	10.50
7	400-990124	Hand Grip	8.40
8	401-990123	Adapter (Not Shown)	4.30
9	400-990100	Outer Shield	17.50
10	700-725492	Chuck (Not Shown)	49.00
11	401-724505	Keyless Chuck (Not Shown)	85.00
12	401-991416	Collar	6.30
13	350-142036	Large Socket Head Cap Screw (12)	3.15
14	350-142032	Large Sheet Metal Screw (4)	1.05
15	350-142001	Flange Nut (4)	1.05
16	401-725491	Drill	99.50



THE BEST VALUE IN THE LINE™

COBRA PRODUCTS, INC.

1 Warner Court
Bridgeport, New Jersey 08014 USA

Customer Service..... **856-241-7700**
Fax Order Service..... **856-241-1699**