

AMAZING MACHINERY

THE PRESSURE WASHER PEOPLE



5.5-24HP GAS & DIESEL ENGINE PRESSURE WASHER MANUAL

READ THIS MANUAL

This manual contains important information for the use and safe operation of your AMAZING MACHINERY™ machine. **FAILURE TO READ THIS MANUAL AND FOLLOW ITS INSTRUCTIONS PRIOR TO OPERATING OR ATTEMPTING ANY SERVICE OR MAINTENANCE PROCEDURE COULD RESULT IN SERIOUS INJURY OR DEATH TO YOU OR OTHER PERSONS; ALSO DAMAGE TO THE MACHINE OR TO OTHER PROPERTY.**

Table of Contents

SECTION 1 OPERATOR'S MANUAL

- UNPACKING.....2
- SAFETY INSTRUCTIONS AND WARNINGS.....3
- OPERATING INSTRUCTIONS.....4

SECTION 2 PARTS AND SERVICE MANUAL

- MAINTENANCE INSTRUCTIONS.....5
- Trouble Shooting.....6
- Pump Part Diagrams.....7
- XMV Pump Break Down A/R.....8
- EZ Series Pump Break Down General.....9
- T Series Pump Break Down General.....10
- Warranty Information.....11

UNPACKING

After you have received your machine and signed that the shipping carton and product look to be in sound condition, open the carton and inspect closer for possible freight damage if you have already signed for your machine, and do find said damage contact Amazing Machinery as soon as possible. Check to see that all ordered parts are present and still in new condition. Start by removing the box and bands. Next remove the pressure washer from the pallet. Never start a new machine until you have checked the fluid levels. Oil can spill during shipping this does not represent damage.

Be certain you have inspected all packaging very well before discarding. Small parts may shake loose during shipping and be unnoticeable in or around large pieces of the packing material.

NOTICE

Information in this operator's manual is subject to change without notice.

AMAZING MACHINERY SHALL NOT BE LIABLE FOR TECHNICAL OR EDITORIAL ERRORS OR OMISSIONS CONTAINED HEREIN. This operator's manual contains information protected by copyright. No part of this operator's manual may be photocopied or reproduced in any form without prior written consent from AMAZING MACHINERY.

© AMAZING MACHINERY, 2005
All rights reserved. Printed in USA.

First Printing (August 2005)

Safety Guidelines



READ THIS FIRST! FAILURE TO READ AND OBSERVE ALL WARNING STATEMENTS COULD RESULT IN SEVERE BODILY INJURY OR DEATH, POSSIBLE INJURY TO OTHER PERSONS, DAMAGE TO MACHINE OR OTHER PROPERTY.

- DO NOT operate this machine in areas where open flames are not permitted. DO NOT store or use combustible materials on or near this machine. Use this equipment only in well ventilated areas. Failure to follow this warning may cause carbon monoxide build up, fire or explosion, and possible injury or death.
- DO NOT fill gasoline tank while engine is running. Allow engine to cool before refueling. Should gasoline be spilled, move the machine away from the area of the spill. Do not attempt to restart the machine until the gasoline has fully evaporated.
- DO NOT operate engine if air cleaner or cover directly over the carburetor air intake is removed.
- DO NOT touch hot mufflers, cylinders or fins, as contact may cause burns
- DO NOT operate this machine while under the influence of alcohol, drugs or while fatigued.
- DO NOT direct discharge stream at yourself or others. Risk of injection or injury may occur. Never put your hand or fingers over the spray tip. Do not try to stop or deflect leaks with your hand or body. Always face nozzle and wand to the ground when testing.
- DO NOT operate this machine WITHOUT wearing protective Eye Wear. Gloves, Hard Hat, Mask, Ear Plugs & Steel Toe Work Boots are also recommended, DO NOT wear loose clothing. Keep your body and clothing clear of the engine and discharge stream when the machine is running.
- DO NOT tie back or block trigger gun in OPEN position. Never leave the pressure washer unattended once you have started it. If you leave, shut down machine completely.
- DO NOT overreach or stand on an unstable support while operating this machine. Maintain good footing and balance.
- DO NOT permit this machine to run while unattended or for extended periods of time with trigger gun closed. Damage to pump may occur.
- DO NOT operate this machine in an unsafe manner or around unsupervised children. Keep all other personnel clear while operating this machine. This product should only be operated by trained personnel.
- DO NOT alter original factory settings prior to operating this machine. Risk of injury to yourself or other persons may occur.
- DO NOT remove hoses, guns, nozzles or any components while this machine is still hot or while it is running.
- DO NOT attempt to service this machine before reading the service manual.
- DO NOT use water with a temperature over 140 degrees Fahrenheit
- DO NOT operate this machine without knowing how to stop and bleed water pressures. Know all controls before using this machine.
- DO NOT spray caustic, acids or abrasive fluids through this machine.
- DO NOT permit water to freeze inside this machine. Pump and plumbing damage may occur.
- Use only recommended AMAZING MACHINERY™ parts when servicing this machine.
- AMAZING MACHINERY™ will not be held liable for any unauthorized modifications made to this machine. Any such action will void the warranty.

Operating Instructions

LOCATION GUIDELINES

- Locate the machine on a solid and level surface so that engine and pump crankcase oil lubricate components properly. Avoid areas where water can build up in the working area. Possible injury can occur caused by the surface becoming slippery from water build up.
- Locate the machine in a well-ventilated area and away from flammable materials or fumes. Be sure ventilation warnings are observed. Keep pressure washer at least 18" away from flammable materials.
- Locate the machine so the operator has easy access to the pressure washer and its controls. Locate the machine so that it is protected from external damage.
- To prevent damage and excessive hose wear, locate the pressure washer so that the hose does not cross traffic areas

STARTING THE MACHINE

Following the steps below will insure successful operation:

- Read this manual completely before attempting to start the machine.
- Check the gasoline tank and fill with a good grade of gasoline.
- Check the engine oil level and fill with SAE 30 weight *high-detergent* oil
- Check the pump oil level and fill with SAE 30w *non-detergent* oil if needed.
- Check water tank to ensure adequate level of water required for the job.
- Attach high pressure hose to base of spray gun.
- Install water nozzle at the end of wand, making sure it is clear of any obstructions.
- Pull trigger on gun until a steady stream of water comes out the nozzle. This purges any air in the system.
- Slide fuel switch to the RIGHT and slide choke switch to the LEFT (closed position).
- Turn ON/OFF switch (on engine) to "ON".
- Start gas engine and allow RPM to develop. Small Engines may kick back. Be careful not to hold cord too tightly.
- Let engine warm up for approximately 30 seconds and slide choke to "OPEN" position.
- Insert detergent siphoning tube into a DOT approved container and open the metering valve for detergent application.
- Check for leaks in the system and cycle trigger gun to insure bypass is adjusted correctly. Repair any leaks and correct unloader adjustment if needed. Turn off machine before attempting any repairs.

WASHING TECHNIQUES

- Washing from bottom up increases dwell time of soap and lessens vertical streaks.
- Turn soap metering valve "OFF" to purge system of soap
- Rinsing with cold water from top down will retard detergent reaction which will enhance the rinsing performance.
- Wash at 30 to 60 degree angles to prevent splashback.

STOPPING THE MACHINE

- Turn engine to "OFF".
- Pull gun trigger to release water pressure from system.
- Disconnect wand & gun assembly.
- Wind up pressure hose on hose reel.

Maintenance Instructions

MOVING, STORAGE

- Place machine in covered area when not in use to protect from elements. Protect machine from freezing in cold temperatures by storing in a heated location.

WINTERIZING

- Direct Drive Machines with Water Tank: To protect the machine from freezing temperatures while storing or transporting, pour antifreeze into partially full (1/8 full or less) water tank. Remove water nozzle from end of wand and carefully insert wand into opening of water tank. Start machine and run until antifreeze water mixture has circulated throughout the machine returning back to the water tank.

ENGINE MAINTENANCE

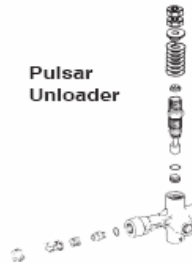
- Every time (before start): Check oil level.
- First 8 hours: Change oil with **SAE 30W High-Detergent Oil**.
- Every 25 hours: Change oil if operating under heavy load or high ambient temperature. Service air cleaner pre-cleaner.
- Every 50 hours: Change oil. Clean and inspect spark arrester if equipped.
- Every 100 hours: Service air cleaner cartridge, replace oil filter (if equipped), Clean oil cooler (if equipped), Clean cooling system.

PUMP MAINTENANCE

- Fill crankcase to dot on oil gauge window per specifications with the specific oil created by the pump manufacturer (i.e. **General Pump Oil**). Ensure the right oil for specific pump as it may vary.
- Change oil after **40 Hour Break-in Period**.
- Change oil every **Three Months or at 500 Hour Intervals** thereafter.

UNLOADER ADJUSTMENT

- All Amazing Machinery machines have the unloader correctly set at the factory. Setting an unloader is a difficult job without the proper equipment and training. Should the need arise to change the unloader settings, please contact your local pressure washer dealer.



CHANGING THE UNLOADER SETTINGS WITHOUT THE PROPER EQUIPMENT AND TRAINING MAY RESULT IN NON-WARRANTY DAMAGE TO THE PUMP.

Troubleshooting

problem	cause	action
Low Water Pressure	Insufficient water source Old or incorrect nozzle Plumbing or hose leak Obstruction in spray nozzle Chemical valve open Unloader valve worn Pump valves dirty or worn	Check hose size/water source Replace nozzle Tighten, repair or replace leak Clean or replace nozzle Close valve or submerge hose Replace unloader Clean or replace packing/valves
No Chemical Flow	Detergent valve closed Low detergent level Chemical screen dirty	Open detergent valve Fill detergent container Clean detergent screen
Pressure Relief Valve Leaks	Nozzle is dirty Defective relief valve Unloader adjusted incorrectly Restriction on discharge hose Scale restricting flow in coil	Clean or replace nozzle Replace relief valve Adjust unloader valve Remove nozzle and flush line Clean coil
Pump Motor Not Running	Pump motor switch off GFCI tripped No voltage to machine Clogged water nozzle Insufficient voltage/amperage	Turn on pump motor switch Reset and test GFCI Check power source Clean water nozzle Use proper drop cord
Pump Noisy	Air in suction line Pump valves dirty Check valve springs worn Low pump oil Pump bearings are worn Incoming water too hot	Check inlet water fittings Clean/replace pump valves Replace check valves Add SEA 30wt. non-detergent Replace/rebuild pump Reduce temperature/ambient
Water In Oil	High humidity environment Oil seal worn Plunger packing worn	Change oil frequently Check and replace oil seal Check and replace packing
Water Dripping/Pump	Plunger packing is worn Plunger retainer oil ring worn Cracked ceramics	Install new packing kit Replace oil ring Replace ceramics
Oil Dripping	Oil seal worn Cracked manifold	Check and replace oil seals Replace manifold
Fluctuating Pressure	Unloader not adjusted Valves worn Dirt or blockage in valve Pump sucking air Worn plunger packing	Adjust to specifications Replace with valve kit Clean or replace valve Check water/detergent supply Replace packing kit
Pump Head Overheating	Extended period in bypass	Pull trigger gun for water flow

Plumbing Diagram



NOTE: Not all Machines are plumbed alike. This diagram will give you a generalized view of pump component location.

MAINTENANCE INSTRUCTIONS

UNLOADER ADJUSTMENT

Adjustment of the unloader requires removal of the locking nut. Turn adjusting nut to the lowest spring tension (counterclockwise) and start machine. Open trigger gun and begin adjustment of pressure by turning adjusting nut (clockwise) until machine is at normal operating pressure. Open and close the trigger gun to set unloader and check for high spike pressures. Turn the adjusting nut (counterclockwise), decreasing pressure slightly. Replace lock nut, adjusting it down to lock the adjusting nut to shaft. See figure 4.

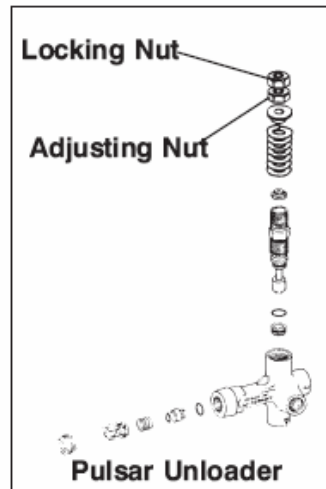
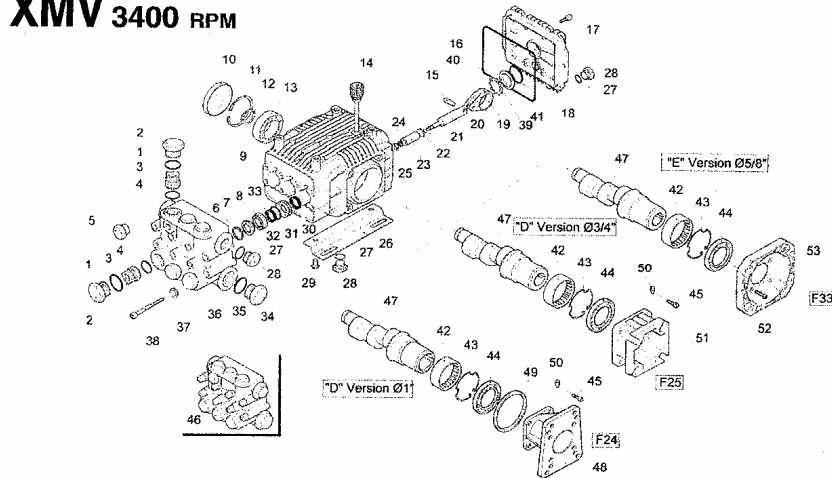


Figure 4

For technical assistance with unloaders call Amazing Machinery at 1-800-504-7435. We have a complete line of unloaders and a knowledgeable staff to answer all of your questions.

XMV 3400 RPM



Pos.	Code	Description	Qty.
1	960160	O-Ring	6
1	1260162	Valve cap (442 in/lbs)	6
2	1260162T	Valve Cap 1/4" threaded (442 in/lbs)	1
3	1269050	Complete valve	6
4	880830	O-Ring	6
5	620301	Plug 1/8G	3
6	1780130	Support ring	3
7	1260130	High pressure packing	3
8	1780090	Piston guide	3
9	1780010	Pump body	1
10	1266740	Cap	1
11	1260790	Circclip	1
12	1780550	Snap ring	1
13	1780490	Bearing	1
14	880130	Oil cap	1
15	1780050	Piston pin	3
16	1780510	O-Ring	1
17	1200430	Bolt (89 in/lbs)	6
18	1789010	Complete cover	1
19	1780040	Con rod	3
20	1780060	Guiding piston	3
21	480480	O-Ring	3
22	1260091	Washer (slinger)	3
23	1780070	Plunger	3
24	1260100	Piston washer	3
25	1260110	Nut (106 in/lbs)	3
26	1380141	Mounting rail	2
26b	2729	5/8" Rail Kit	1
26c	2633H	2-5/8" Rail Kit	1
27	740290	O-Ring	3
28	1980740	3/8" G plug	3
29	1260470	Bolt	4
30	1260460	Seal	3
31	1780100	Rear piston guide	3
32	770260	O-Ring	3
33	1260440	Low pressure seal	3
34	820361	Brass Plug	1
35	180101	O-Ring	1
36	1780380	Pump head	1
37	1381550	Washer	8
38	1322730	Head bolt (133 in/lbs)	8
39	1260430	Snap ring	1
40	1260250	Oil sight glass	1

Pos.	Code	Description	Qty.
41	1140450	O-Ring	1
42	1321190	Bearing	1
43	1321080	Snap ring	1
44	4800571	Oil seal	1
45	180030	Bolt	4
46	1789200	Pump head pre assem.	1
47	1780340	Hollow shaft Ø1"	1
48	1780920	Hollow shaft Ø1"	1
49	1780330	Hollow shaft Ø1"	1
50	1780590	Hollow shaft Ø3/4"	1
51	1780930	Hollow shaft Ø3/4"	1
52	1780860	Hollow shaft Ø5/8"	1
53	1597	Gas engine flange	1
54	1780430	Bushing	1
55	820440	Set screw	1
56	1780580	Gas engine flange	1
57	620610	Bolt	1
58	1780910	Electric motor flange	1

Legend

Ø15	Ø15	Ø15	Ø15
For ○	For □	For ∇	For ◆
XMV3G25	XMV3.5G22	XMV4G20	XMV2G25
XMV3G26	XMV3.5G25	XMV4G22	
XMV3G27	XMV3.5G30	XMV4G25	
XMV3G30		XMV4G30	

Repair Kits

Water Seals	Valves	Pistons	Oil Seals
Kit 2741	Kit 1864	Kit 2544	Kit 2787
Pos. Qty.	Pos. Qty.	Pos. Qty.	Pos. Qty.
7 3	3 6	21 3	10 1
32 3	4 6	22 3	16 1
33 3		23 3	30 3
		24 3	44 1
		25 3	

Support Rings

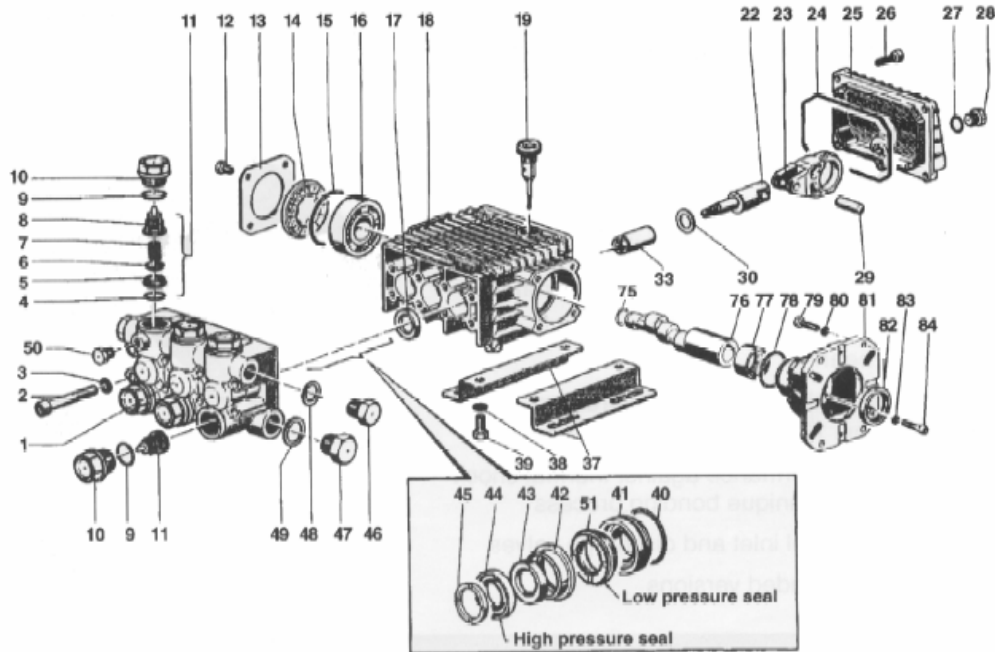
Kit 2740
Pos. Qty.
6 3

Special Parts

Code	Description	Qty.
2776	Viton water seals Ø15	1
2817	Kit for up to 180°F Ø15 High Temp	1

EZ Series 44 – Triplex

GENERAL PUMP *A member of the Interpump Group*



PARTS LIST

Item	Part No.	Description	Kit No.	Qty.	Item	Part No.	Description	Kit No.	Qty.	Item	Part No.	Description	Kit No.	Qty.
1.	44.1206.41	Manifold		1	23.	44.0300.22	Connecting Rod		3	48.	96.7380.00	Washer		1
2.	99.3175.00	Screw		8	24.	90.3920.00	O-Ring		1	49.	96.7514.00	Washer		1
3.	96.7014.00	Washer		8	25.	44.1600.22	Fear Cover		1	50.	98.1966.00	Cap Screw		1
4.	90.3841.00	O-Ring	123	6	26.	99.1837.00	Screw		5	51.	90.2603.00	Seal, Low Pressure		3
5.	36.2003.66	Valve Seat	123	6	27.	90.3585.00	O-Ring		1	75.	90.0635.00	Retaining Ring		1
6.	36.2001.76	Valve	123	6	28.	98.2041.00	Cap Screw		1	76.	44.0221.65	Crankshaft (EZ4040G34)		1
7.	94.7376.00	Spring	123	6	29.	97.7340.00	Pin		3		44.0212.65	Crankshaft (EZ4035G34)		1
8.	36.2025.51	Valve Cage	123	6	30.	96.6967.00	Washer		3		44.0209.65	Crankshaft (EZ4030G34)		1
9.	90.3847.00	O-Ring	124	6	33.	44.0402.66	Plunger, 13 mm		3	77.	91.8568.00	Roller Bearing		1
10.	98.2226.00	Cap Screw	124	6	37.	50.2000.74	Rail		2	78.	90.4097.00	O-Ring		1
11.	36.7115.01	Valve Assembly	123	6	38.	96.7016.00	Washer		4	79.	99.2755.00	Screw, 5/16x1		4
12.	99.1807.00	Screw		4	39.	99.3037.00	Nut		4		99.3345.00	Screw, 3/8x1		4
13.	50.1500.74	Bearing Cover		1	40.	90.3612.00	O-Ring		3	80.	96.7020.00	Washer, Ø8 mm		4
14.	44.2118.01	Spacer		1	41.	44.0803.70	Packing Retainer		3		96.7104.00	Washer, Ø10 mm		4
15.	90.4097.00	O-Ring		1	42.	44.2162.70	Intermediate Ring		3	81.	10.0518.22	Gas Flange		1
16.	91.8328.00	Ball Bearing		1	43.	90.5076.00	Packing		3	82.	90.1690.00	Oil Seal		1
17.	90.1614.00	Oil Seal	23	3	44.	90.2602.00	Packing		3	83.	96.6938.00	Washer		4
18.	44.0100.22	Crankcase		1	45.	44.1002.51	Head Ring		3	84.	99.1912.00	Screw		4
19.	98.2103.00	Oil Dip Stick		1	46.	98.2100.00	Cap Screw		1					
22.	44.0501.66	Piston Guide		3	47.	98.2176.00	Cap Screw		1					

REPAIR KITS

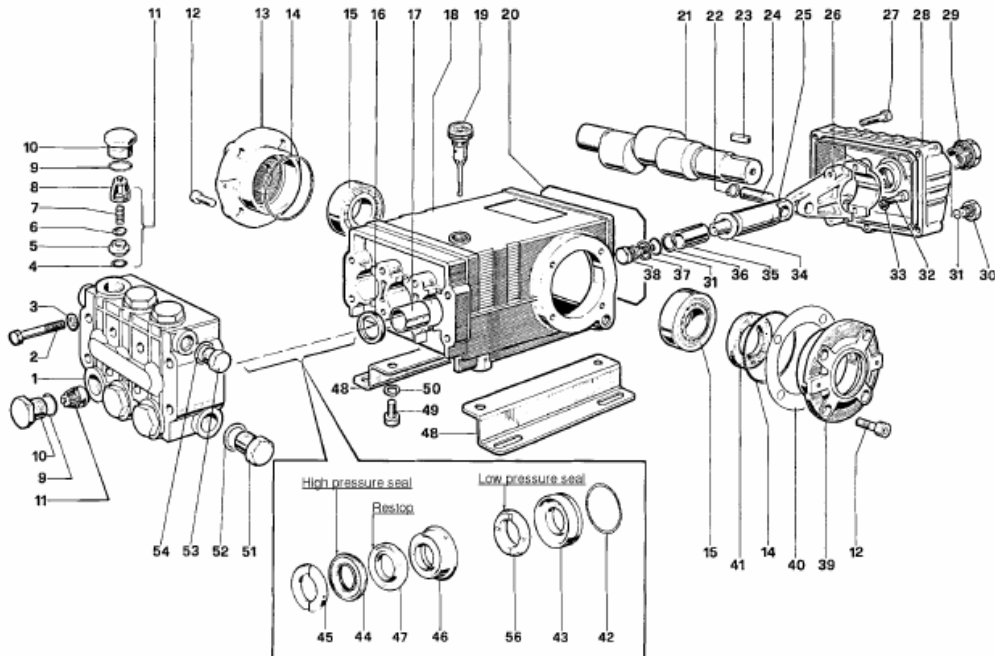
KIT NO.	23	123	124		
ITEM NO'S INCLUDED IN KIT	17	4, 5, 6, 7, 8, (11)	9, 10	43, 44, 51	40, 41, 42, 43, 44, 45, 51
NUMBER OF ASSEMBLIES IN KIT	3	6	6	3	1
NUMBER OF CYLINDERS KIT WILL SERVICE	3	3	3	3	1

TORQUE SPECS*

Position	Fl.-lbs.	N-M
2	14.7	20
10	73.7	100
12	7.3	10
26	7.3	10
28	14.7	20
46	29.4	40
47	29.4	40
50	9.6	13
79	14.7	20
84	7.3	10

*Decrease torque by 20% if threads are lubricated.

T Series 47 S – 20 mm x 12 mm **GENERAL PUMP** *A member of the Interpump Group*



PARTS LIST

ITEM PART NO.	DESCRIPTION	KIT NO.	QTY.	ITEM PART NO.	DESCRIPTION	KIT NO.	QTY.	ITEM PART NO.	DESCRIPTION	KIT NO.	QTY.
1. 47120841	Manifold		1	19. 98210600	Oil Dip Stick		1	37. 96728000	Washer	6	3
47120941	Manifold, Nickel-Plated (TS2011-N)		1	20. 90392200	O-Ring, Cover		1	38. 47219566	Screw, Plunger	6	3
2. 99320600	Screw, M8 x 70		8	21. 47021835	Crankshaft		1	39. 47150022	Cover, Crankcase		1
3. 96702000	Washer, M8.4		8	22. 90055700	Ring, Snap		6	40. 97567800	Shim		2
4. 90384100	O-Ring, .674 x .103	1	6	23. 91489000	Key		1	41. 90164800	Seal, Oil	3	1
5. 36200366	Seat, Valve	1	6	24. 97738000	Pin, Wrist		3	42. 90361600	O-Ring, 1.364 x .070	10, 28	3
6. 36200176	Plate, Valve	1	6	25. 47050554	Guide, Plunger		3	43. 47080570	Retainer, Packing	10, 28	3
7. 94737600	Spring	1	6	26. 47030001	Rod, Connecting		3	44. 90270500	Packing	28, 69	3
8. 36200251	Guide, Valve	1	6	27. 99191200	Screw, M6 x 30		5	45. 47100051	Ring, Head, M20	7, 28	3
9. 90384700	O-Ring, .797 x .103	4, 5	6	99183700	Screw, M6 x 14 (TS1011)		5	46. 47216970	Intermed. Ring	28, 71	3
10. 98222000	Cap	4	6	28. 47160122	Cover, Crankcase		1	47. 90270400	Restop Ring	28, 69, 71	3
98222200	Cap, Ni-Plated (TS2011-N)	5		47160022	Cover, Crankcase (TS1011)		1	48. 47200074	Pump Feet		2
11. 36703201	Valve Assembly	1	6	29. 97596800	Oil Indicator		1	49. 99364400	Screw, M10 x 18		4
12. 99303900	Screw, M8 x 16		8	30. 98204100	Cap		1	50. 96710600	Washer, M10.2		4
13. 47150122	Cover, Crankcase		1	31. 90358500	O-Ring, .426 x .070	6	4	51. 98217600	Cap		1
14. 90391300	O-Ring, 2.675 x .103		2	32. 99309900	Screw, M8 x 35		6	52. 96751400	Washer, M21.5		1
15. 640047	Bearing, Roller		2	33. 96701400	Washer, M8.4		6	53. 98210000	Cap		1
16. 90162500	Seal, Oil	2	3	34. 96728600	Washer, M14		6	54. 96738000	Washer, M17.5		1
17. 90912600	Bushing		3	35. 47040409	Plunger, (20 mm)		3	56. 90271000	Seal, Low Press., 20mm	28, 69	3
18. 47010522	Crankcase		1	36. 90506700	Ring, Back-up		6				

REPAIR KITS

KIT NO.	1	2	3	4	5	6	7	10	28	69	71
ITEM NO.s INCLUDED IN KIT	4, 5, 6, 7, 8 (11)	16	41	9, 10	9, 10	31, 34, 36, 37, 38	45	42, 43	42, 43, 44, 45, 46, 47, 56	44, 47, 56	46, 47
NUMBER OF ASSEMBLIES IN KIT	6	3	2	6	6	3	6	3	1	3	3
NUMBER OF CYLINDERS KIT WILL SERVICE	3	3	-	3	3	3	3	3	1	3	3

TORQUE SPECS*

Position	Ft.-lbs.
2	22.1
10	73.7
12	14.7
27	7.3
29	13.2
30	14.7
32	14.7
38	14.7
49	29.4
51	29.4
53	29.4

*Decrease torque by 20% if threads are lubricated.

WARRANTY

MANUFACTURER LIMITED WARRANTY

ENGINES

Honda GC Series Engines; ONE Year from date of purchase Honda will repair or replace any manufacturer defect at their expense. To be handled directly by Honda Service Centers. See owners manual for details.

Honda GX Series Engines; TWO years from date of purchase Honda will repair or replace any manufacturer defect at their expense. To be handled by Honda Service Centers. See owners Manual for details.

Vanguard Series Engines; TWO years from date of purchase Briggs and Stratton will repair or replace any manufacturer defect at their expense. To be handled by Briggs and Stratton Service Centers. See owners Manual for details.

Robin Series Engines; TWO years from date of purchase Robin/Subaru will repair or replace any manufacturer defect at their expense. To be handled by Robin/Subaru Service Centers. See owners Manual for details.

Yanmar Diesel Engines; TWO years from date of purchase Yanmar will repair or replace any manufacturer defect at their expense. To be handled by Yanmar Service Centers. See owners Manual for details.

ELECTRIC MOTORS

Marathon and Baldor brand electric motors have a manufacture limited warranty of one year from purchase date to repair or replace the motor, at their options, any manufacturing defects.

The limited warranty does not include damage from low voltage or amperage use, high voltage or amperage use, water, or any other operator incurred damage.

PUMPS

Pump manufacturers offer a "one and five" limited warranty on tri-plex ceramic plunger type pumps, from date of purchase.

The body, head and power train of the pump is warranted for 5 years from date of purchase against manufacturer defects. See owners manual for details. The valves, packings and "o"rings are warranted for one year from date of purchase against manufacturer defects. See owners manual for details. Pump manufacturers offer a one year limited warranty on Axial Type pumps from date of purchase. See owners manual for details.

NOTE - Over Heated Pumps void all warranties.

ACCESSORY PARTS

Including, but not limited to; unloader valve, thermal relief valve, reels, easy start valve, chemical injector, rotating nozzles, spray tips, spray guns, wand extensions, telescoping wands, ball valves, sand injectors, quick couplers, high pressure hose, ground fault interrupter; all burner electronics and wiring, flow switches, diesel fuel injectors are warranted for repair or replacement by Equipment Manufacturer for a period of 90 days from date of purchase. Including, but not limited to; Surface Cleaners, Becket or Wayne Burners, Burner Fans and Heater Coils warranted against manufacture defects for repair or replacement by Equipment Manufacturer for a period of one (1) year from date of purchase. Including, but not limited to; Cart or Frame warranted against manufacture defects for repair or replacement by Equipment Manufacturer for a period of one (1) year from date of purchase.

LIMITATION OF LIABILITY

Amazing Machinery and Equipment Manufacturer liability for special, incidental, or consequential damages is expressly disclaimed. In no event shall any liability exceed the purchase price of the product in question. The warranty contained herein is in lieu of all other warranties express or implied, including any implied warranty of fitness for particular purpose.

NOTE - It is understood that a manufacturers limited warranty pertains to equipment used in it's prescribed manner, without abuse, and does not include wear and tear.

NOTE - All freight charges incurred on warranty situations are the responsibility of the customer.

Specifications, Warranties and Pricing are subject to change without notice.

*Refund does not include shipping/handling fees. No refund will be given for installation kits. Customer is responsible for lost or misdirected packages. It is recommended that the customer insure the package for its full retail value. This warranty does not cover or include any damage as a result of acts of God, improper installation, alteration, negligence or abuse.