

Owner's Manual

Model: LG-8-P (5301814)

(8 Gallon Super Spot Sprayer)



Technical Specifications

- 8 Gallon, Corrosion-Resistant Polyethylene Tank
- 1.0 G.P.M. Diaphragm Pump With Cooling Fan & In-line Fuse
- Telescopic Handle For Easy Mobility & Storage
- Rechargeable 12V Battery (AC Charger Included)
- Coiled Hose With 15 Feet Working Length
- Squeeze Lever Handgun
- Vented Lid
- 8 Inch Wheels
- Unit height with handle Extended = approx 37"
- Unit height with handle Retracted = approx 22"

Assembly

This unit is mostly assembled at the factory. You may need to screw the barrel portion of the handgun onto the trigger assembly, as this may be disassembled to fit into the box.

BEFORE RETURNING THIS PRODUCT FOR ANY REASON, PLEASE CALL

1-800-831-0027

IF YOU SHOULD HAVE A QUESTION OR EXPERIENCE A PROBLEM WITH YOUR FIMCO INDUSTRIES PRODUCT:

1-800-831-0027

BEFORE YOU CALL, PLEASE HAVE THE FOLLOWING INFORMATION AVAILABLE: SALES RECEIPT & MODEL NUMBER. IN MOST CASES, A FIMCO INDUSTRIES EMPLOYEE CAN RESOLVE THE PROBLEM OVER THE PHONE.

General Information

Thank you for purchasing this product. The purpose of this manual is to assist you in operating and maintaining your sprayer. Please read it carefully, as it furnishes information which will help you achieve years of trouble-free operation.

Warranty/Parts/Service

For home usage, products are warranted for one year from date of purchase against manufacturer or workmanship defects.

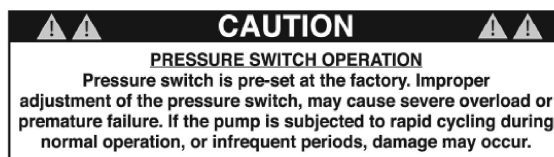
Commercial users have a 90 day warranty.

Your authorized dealer is the best source of replacement parts and service. To obtain prompt, efficient service, always remember to give the following information...

- Correct Part Description and/or part number.
- Model number/Serial number of your sprayer.

Part descriptions and part numbers can be obtained from the illustrated parts list section(s) of this manual.

Whenever you need parts or repair service, contact your distributor/dealer first. For warranty work, always take your original sales slip, or other evidence of purchase date, to your distributor/dealer.



Operation

Fill the container with solution (water and chemical) then stir to mix. Mixing can also be done by sticking the handgun nozzle into the container and spray into the solution.

Turn the switch to "ON" and squeeze the lever on the handgun to spray.

After spraying, rinse and clean the equipment both inside and out. Flush the pumping system with water.



www.fimcoindustries.com

1000 FIMCO Lane, P.O. Box 1700, North Sioux City, SD 57049
Toll Free Phone: 800-831-0027 : Toll Free Fax: 800-494-0440

Form No. 1687 [5008080 (12/11)] Printed in the U.S.A.

Battery Charging

It is a good idea to charge the battery for 8-10 hours before using the sprayer, especially if you plan to spray for a long period of time. This will insure that the battery is fully charged.

Charging the battery may be done as follows...

1. Insert the plug (which is molded onto the end of the charger wire) into the jack, which is located on the rear of the sprayer.
2. Plug the charger into a 110 Volt AC electric receptacle.
3. Disconnect the plug from the jack and the charger from the electrical outlet when the charging operation is complete.

CAUTION: Do not leave the charger connected to the battery for longer than 20 hours, as it may cause premature battery failure.

Winter Storage

Drain all water out of your sprayer, paying special attention to the pump, handgun, and valve(s). These items are especially prone to damage from chemicals and freezing weather.

The sprayer should be winterized before storage by pumping a solution of RV antifreeze through the entire plumbing system. This antifreeze solution should remain in the plumbing system during the winter months. When spring time comes and you are preparing your sprayer for the spray season, rinse the entire plumbing system out, clearing the lines of the antifreeze solution. Proper care and maintenance will prolong the life of your sprayer.

After Spraying

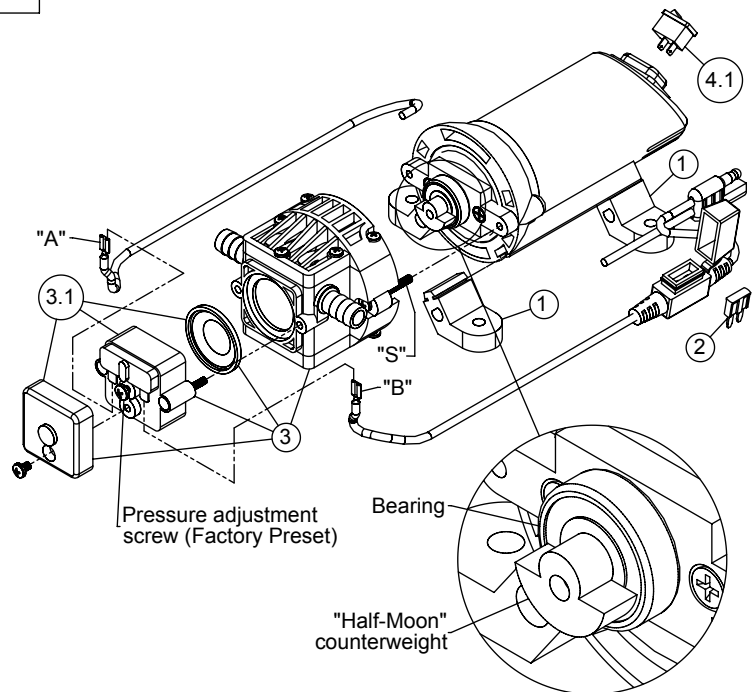
After use, fill the sprayer tank part way with water. Start the sprayer, and allow the clear water to be pumped through the plumbing system and out through the spray nozzles. Refill the tank about half full with plain water and use FIMCO Tank Neutralizer and Cleaner, and repeat cleaning instructions above.

Flush the entire sprayer with the neutralizing/cleaning agent, then flush out one more time with plain water. Follow the chemical manufacturer's disposal instructions of all wash or rinsing water.

For the boom, (if applicable) remove the tips and screens from the nozzle assemblies. Wash these items out thoroughly. Blow the orifice clean and dry. If the orifice remains clogged, clean it with a fine bristle (NOT WIRE) brush, or with a toothpick. Do not damage the orifice. Water rinse and dry the tips before storing.

WARNING: Some chemicals will damage the pump valves if allowed to soak untreated for a length of time! **ALWAYS** flush the pump as instructed after each use.

#5275702 Pump
(12 Volt, 4 Amp, 1.0 gpm, 35 psi)



Troubleshooting a 1.0 g.p.m. Pump:

Pump will NOT run:

- Check inline fuse on the wires on the pump. If blown, replace with new fuse. (5 Amp mini-blade fuse...#5157204)
- Make sure BOTH on/off switches are in the 'on' position (-).
- Make sure you 12 volt source (battery) is fully charged.
- Insure a tight connection at the battery clips.

If none of the above will work, try pulling wire terminal "A" off of the spade terminal of the pressure switch, and cross it over and touch terminal "B". (You will need to remove the pressure switch cap before doing this) If your pump runs when you do this, you know you will need to replace your pressure switch.

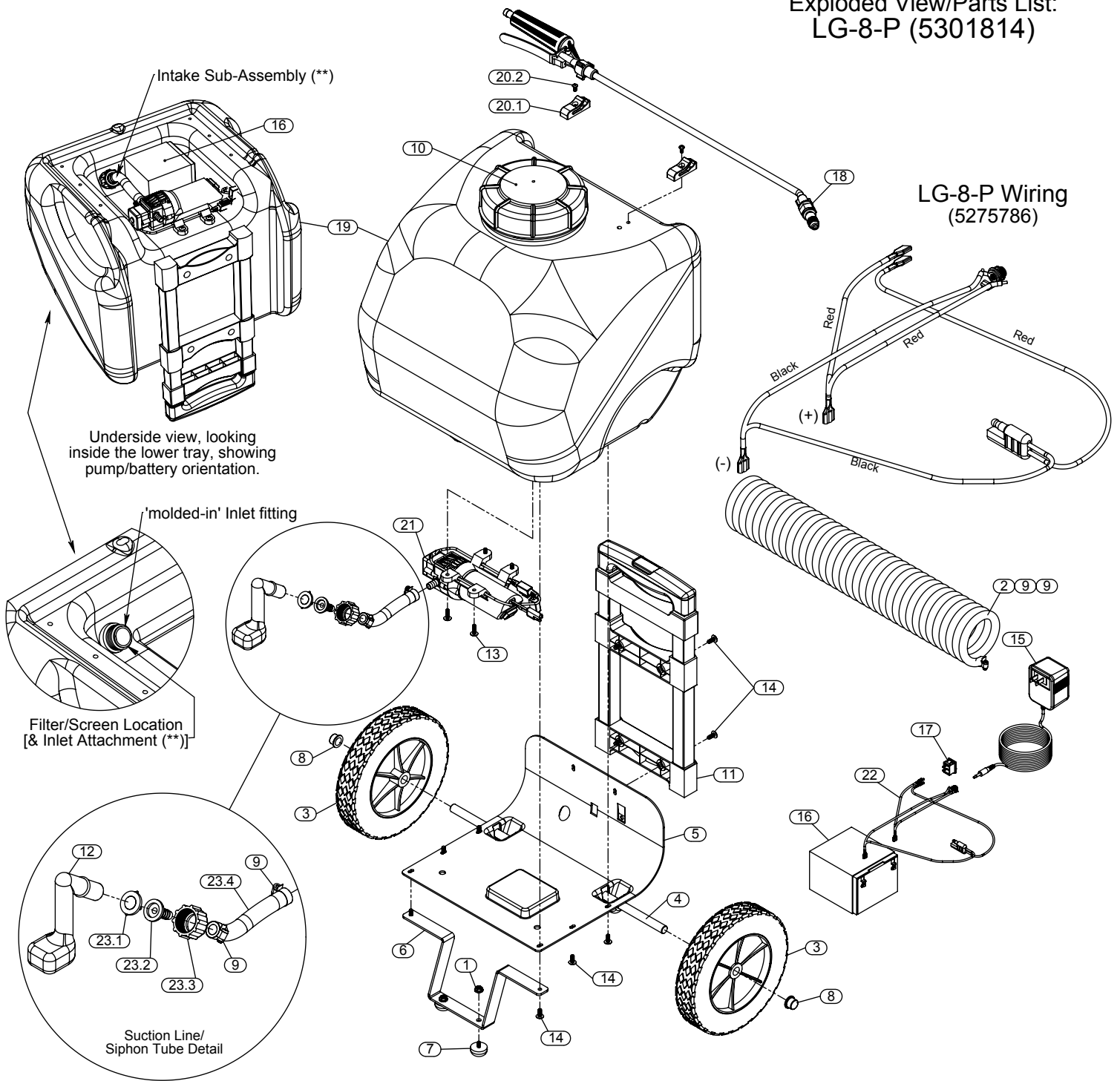
Another thing you can try is to take apart the switch box on the lead wire assembly (#5274443) with the (2) phillips head screws, and 'hot-wire' it together. Take the (2) wires that are screwed to the rocker switch, off of the switch and twist them together. This will insure you are getting the full 12 volts to the pump. If your pump runs after doing this, you will know that your lead wire assembly needs to be replaced.

Pump runs, but does not prime:

- Check line strainer (screen) at the inlet location, at the tank. You will need to unscrew the knurled nut to access this screen. (see exploded view later in this manual) The tank should be empty while performing this, otherwise you may need to tilt the tank backwards a little bit so any solution in the tank will be away from this inlet location. Periodically take the screen at this location out and clean it.
- Unscrew (2) screws "S". This will allow you to inspect the bearing and counterweight.
- Both the counterweight and the bearing need to spin freely, and they both need to spin INDEPENDENT of each other. If these 2 pieces are 'stuck' together, you will need to break them free with some good quality lubricant or something similar and this should restore most of your prime.

Item No	Part Number	Qty	Description	List Price
1	5095202	1	Pump Foot (Pkg. of 4)	4.99
2	5157204	1	5 Amp Mini Fuse	3.99
3	5275531	1	Pump Assembly w/Pressure Switch	37.95
3.1	5157201	1	Pressure Switch w/Diaphragm	23.95
4.1	5157207	1	Rocker Switch	6.99

Exploded View/Parts List: LG-8-P (5301814)



Item No	Part Number	Qty	Description	List Price
1	5006186	2	#10-24 Hex Whiz (Flange) Locknut	.25
2	5020479	1	15 Ft. Coiled Hose	9.98
3	5021044	2	Wheel, 8" x 1.75" x 1/2"	6.00
4	5024106	1	Axle (LG-8-P)	3.99
5	5027070	1	Cover Plate	3.36
6	5038746	1	Front Foot Bracket	7.00
7	5040004	2	Rubber-Headed Machine Screw (#10-24)	1.75
8	5046023	2	1/2" Cap Push Nut, Zinc Plated	.56
9	5051114	4	Hose Clamp (3/8"-1/2")	.63
10	5058189	1	5" Lid (NO Lanyard)	10.50
11	5078207	1	Locking Handle (LG-8)	10.99
12	5100710	1	Siphon Tube (LG-8)	2.99
13	5117167	4	#10-24 x 5/8" Phillips Truss Head Machine Screw	.25
14	5117234	10	#10-24 x 1/2" Phillips Truss Head Machine Screw	.25

Item No	Part Number	Qty	Description	List Price
15	5157124	1	Battery Charger (LG-5/LG-8)	18.90
16	5157209	1	Battery (12 Volt, 5 Amp)	45.00
17	5157212	1	ON/OFF Rocker Switch (w/o Cover)	.99
18	5163100	1	Low-Flow Handgun w/X-26 Tip	9.95
19	5169279	1	8 Gallon Tank	35.00
20.1	5053096	2	Handgun Clip, for Blow-Molded Tanks	.95
20.2	5117293	2	#10-24 x 3/8" Phillips Round Head Machine Screw	.25
21	5275702	1	Gold Series 1.0 g.p.m. Pump	89.00
22	5275786	1	Wiring Assembly (LG-8-P)	12.85
23	5277447	1	Intake Sub-Assembly (LG-8)	
23.1	5116242	1	Strainer, 1" Filter Washer	.31
23.2	5149034	1	Poly Swivel, 3/8" Hose Barb	.65
23.3	5006209	1	Poly Knurled Swivel Nut, 3/4" FGHT	.70
23.4	5020505	1	Hose, 3/8"-1 Brd. x 5 1/4"	

(List Prices are Subject to Change)